

Scholten & Baijings

"We are first and foremost designers who think functionality is just as important as the beauty of the product. Our signature and key words are colour, rich details, transparency, coupled with hand-drawn illustration and a combination of different materials. We use these elements to change anonymous mass production into products with a personal touch and into objects that stand the test of time. We think in colour; it's not a last minute afterthought."



Stefan Scholten e Carole Baijings hanno fondato l'omonimo studio di design Scholten & Baijings nel 2000 e sono oggi universalmente considerati come uno dei più interessanti, innovativi e dinamici duo nel campo del design a livello mondiale. Celebri per i loro prodotti sensibili e discreti ma funzionali, il loro straordinario e spesso imprevisto uso del colore, i loro oggetti di squisita fattura, hanno applicato il loro stile unico nei più diversi settori, dalla ceramica e l'argenteria ai tessuti e perfino a una concept car. Scholten & Baijings hanno ricevuto numerosi premi prestigiosi come l'Elle Decoration International Design Award (EDIDA) per Young Designer Talent 2011, la nomination per il Designer of the Year ai Wallpaper* Design Awards 2015 e Oeuvre Premio Sanoma Woon Awards 2014. I loro prodotti ed edizioni limitate sono esposti in musei e gallerie come il Cooper-Hewitt National Design Museum a New York, l'Art Institute di Chicago, il Victoria & Albert Museum di Londra e il Museo Boijmans van Beuningen a Rotterdam. Tra i loro clienti annoverano Maharam, Hay, Ikea, Karimoku New Standard, Georg Jensen, 1616 / Arita Japan, Moooi, Thomas Eyck e Mini.

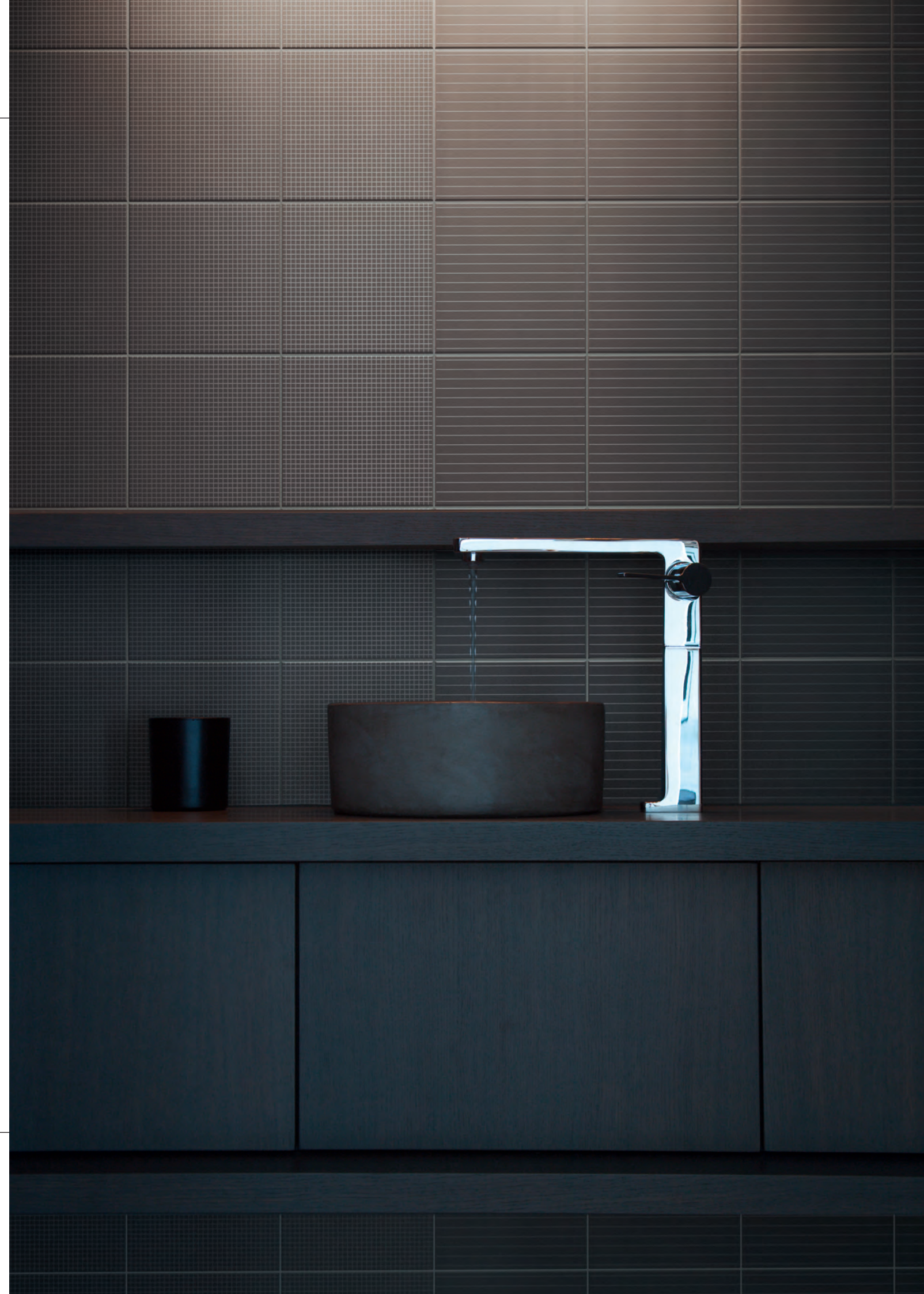
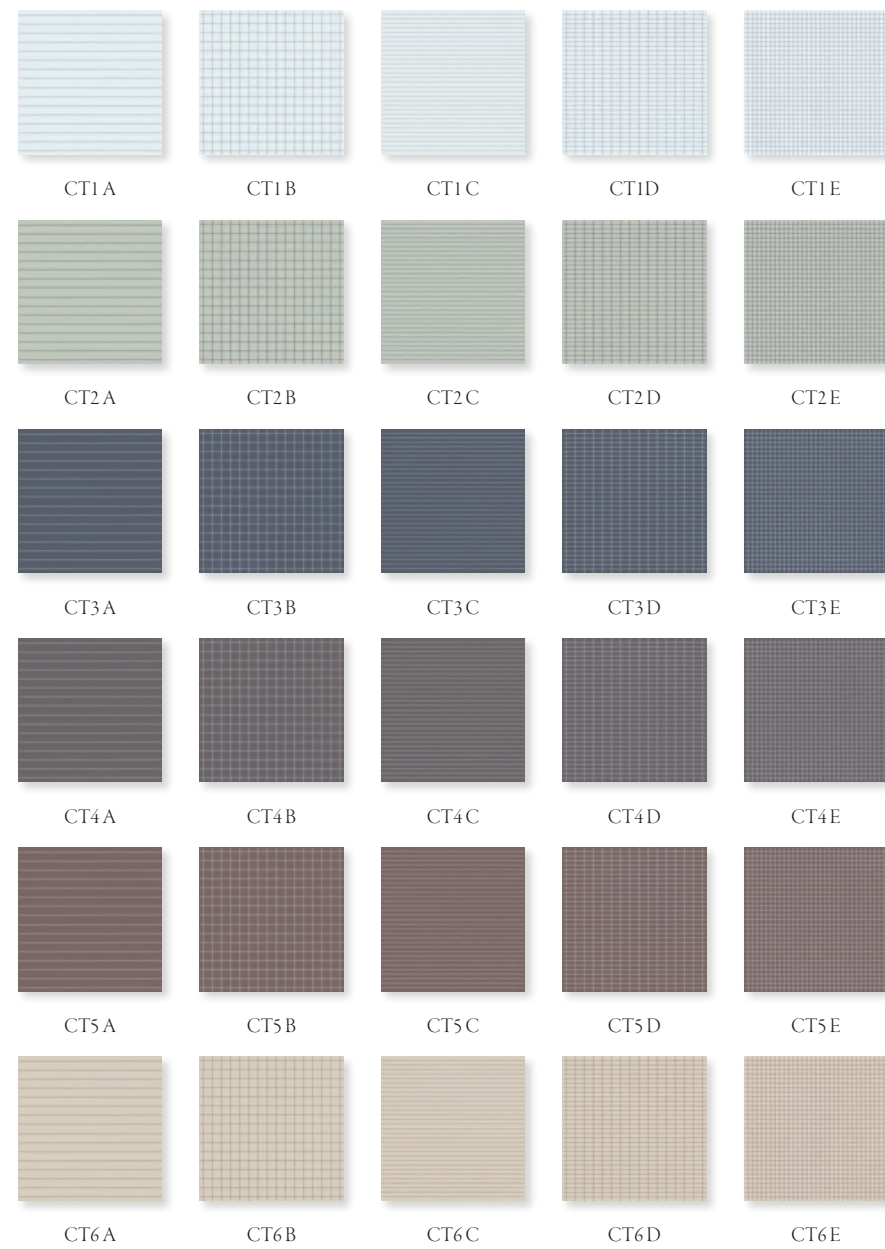
Stefan Scholten and Carole Baijings established their eponymous studio for design Scholten & Baijings in 2000, and are now widely regarded as one of the most exciting, innovative and dynamic design duos in the world. Renowned for their sensitive and subtle yet functional products, their striking and often unexpected use of colour, and their exquisitely crafted objects, they have applied their distinctive style to everything from ceramics and silverware to textiles and even a concept car. Scholten & Baijings have been awarded numerous prestigious prizes, such as the Elle Decoration International Design Award (EDIDA) for Young Designer Talent 2011, a nomination for Designer of the Year at the Wallpaper* Design Awards 2015 and Oeuvre Award Sanoma Woon Awards 2014. Their products and limited editions are presented in museums and galleries such as the Cooper-Hewitt National Design Museum, New York, the Art Institute of Chicago, the Victoria & Albert Museum, London and the Museum Boijmans van Beuningen, Rotterdam. Industrial clients include Maharam, Hay, Ikea, Karimoku New Standard, Georg Jensen, 1616 / Arita Japan, Moooi, Thomas Eyck and Mini.

COLOUR TILES

COLOUR TILES

Collezione di piastrelle in ceramica da rivestimento, realizzate in bicottura finitura opaca. Un sistema grafico decorativo, componibile, costituito da cinque decori combinabili tra loro in verticale e orizzontale. Realizzato in serigrafia e proposto in otto colori, nel formato cm 20x20, spessore mm 8. Completa la proposta, una gamma di tinte unite da pavimento, realizzata in grés bianco smaltato perfettamente coordinata ai decori, finitura materica opaca, spessore mm 7.

Collection of double-fired ceramic tiles with matt finish. A decorative, modular graphical system made up of five decorations that can be combined both vertically and horizontally. Screen printed and available in eight colours in the 20x20 cm format with thickness of 8 mm. The collection is completed with a range of solid colours for floors produced from glazed white stoneware that perfectly match the decorations, with matt textured finish and thickness of 7 mm.



COLOUR TILES

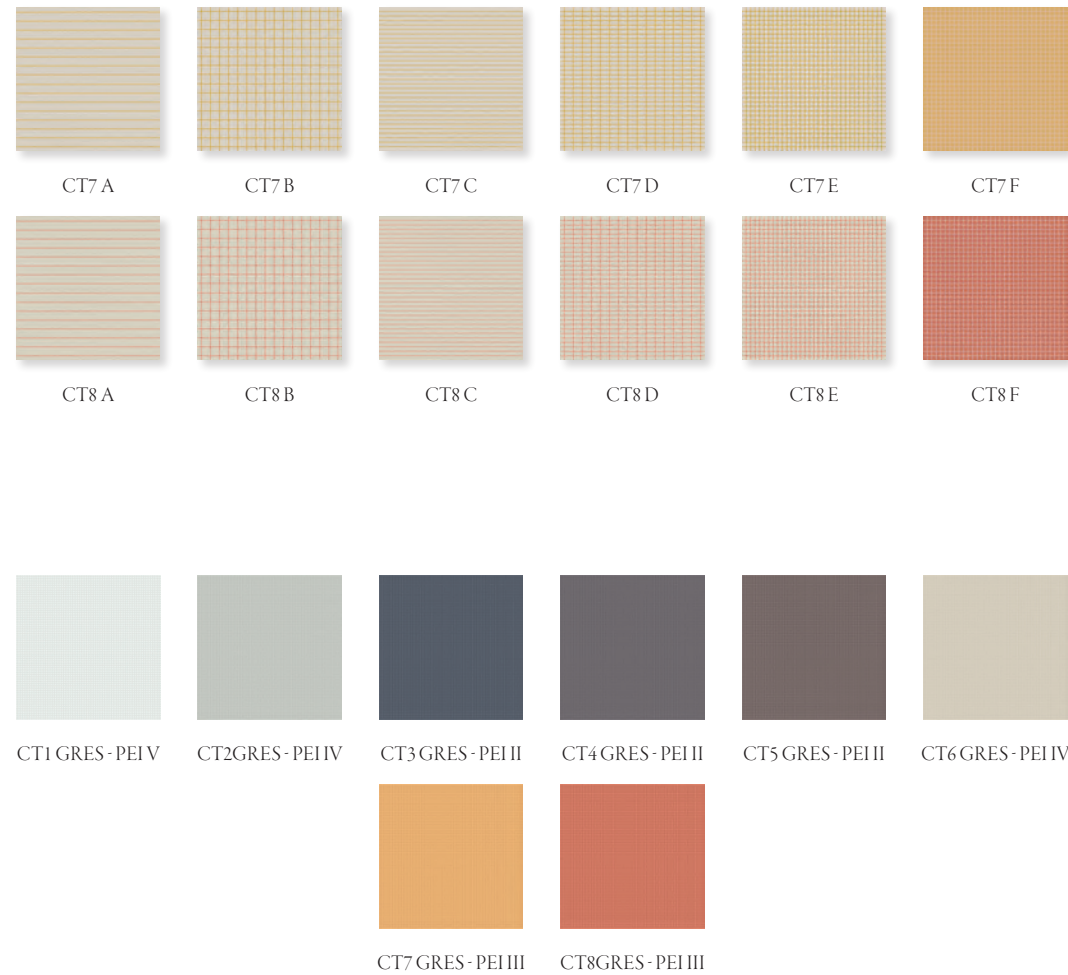
Collection de carreaux de revêtement en céramique, réalisés en bi-cuisson de finition opaque.

Conception graphique décorative, modulable, composée de cinq motifs qui peuvent être associés entre eux de manière verticale et horizontale. Réalisée par sérigraphie et proposée en huit coloris au format 20x20 cm, épaisseur 8 mm. La collection est complétée par une gamme de carreaux pour sol de teintes unies, réalisée en grès blanc émaillé pouvant parfaitement se marier aux motifs, avec une finition opaque des matériaux, épaisseur 7 mm.

Коллекция керамической отделочной плитки двойного обжига с матовой поверхностью.

Это декоративная графическая система, состоящая из пяти модулей, комбинируемых между собой по вертикали и горизонтали. Изготовлена из шелкографии и предлагается в восьми цветах, размер 20x20 см, толщина 8 мм.

Коллекция дополнена широкой гаммой однотонной плитки для пола, изготовленной из белого глазурованного греса, идеально сочетающейся с декором с матовым покрытием, толщина 7 мм.







Pagina / Page 91
BAGNO / BATHROOM, rivestimento / coating COLOUR TILES
 4A-4E (cm 20x20 - 8"x8")

Pagina / Page 93
BAGNO / BATHROOM, rivestimento / coating COLOUR TILES
 8A-8C-8E-8F (cm 20x20 - 8"x8")

Pagina / Page 94-95
BAGNO / BATHROOM, rivestimento / coating COLOUR TILES
 6A-6B-6C-6D-6E (cm 20x20 - 8"x8")

Pagina / Page 96
BAGNO / BATHROOM, rivestimento / coating COLOUR TILES
 3A-3D-3E (cm 20x20 - 8"x8"), pavimento / flooring COLOUR
 TILES 3 Grès (cm 20x20 - 8"x8")



Pagina / Page 97
BAGNO / BATHROOM, rivestimento / coating COLOUR TILES
 7A-7C-7D-7E-7F (cm 20x20 - 8"x8")

Pagina / Page 98-99
CUCINA / KITCHEN, rivestimento / coating COLOUR TILES
 2A-2B-2C-2E, COLOUR TILES 4A (cm 20x20 - 8"x8")

