

# Colours & background



Colore come libertà compositiva. Il colore è materia, design, fantasia. Il colore è presenza, discrezione, neutralità. Molto dipende dalle scelte del progettista, che può disporre di un prodotto da interpretare in funzione delle diverse esigenze progettuali.

Colour as freedom of composition. Colour is substance, design, imagination. Colour is presence, discretion, neutrality. Much depends on the preferences of the designer, who can use a product to be interpreted according to a range of design needs.

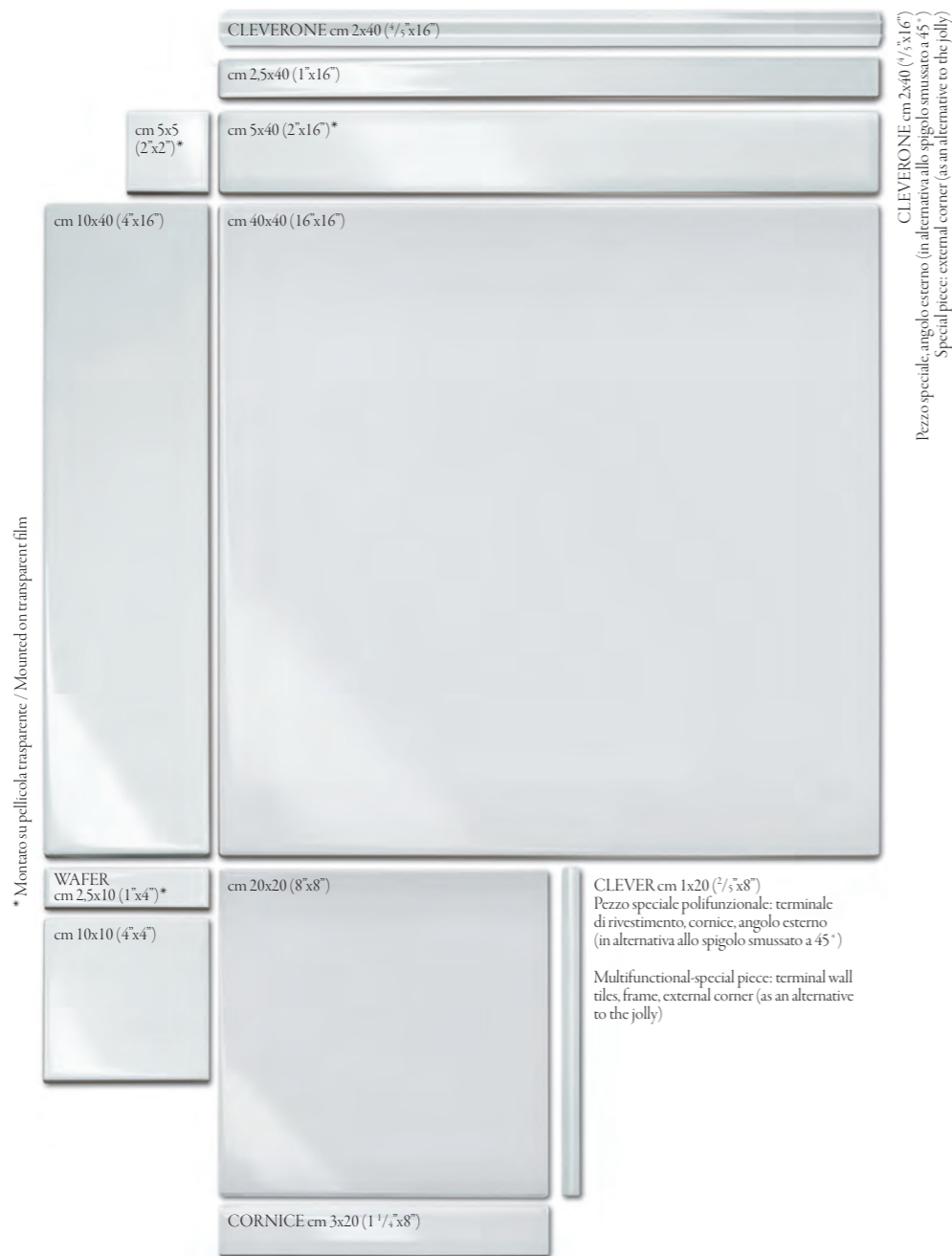
COLORE&COLORE  
BIANCO&NERO  
ARLECCHINO  
WAFERMIX  
FABRICS  
LAYERS  
COLORADO  
MATRIX

COLOURS & BACKGROUND

# COLORE&COLORE

Piastrelle in bicottura con finitura lucida. Una teoria di 36 colori, tutti abbinabili tra loro, divisi in 9 famiglie di riferimento. "Colore&Colore" è un magnifico gruppo di tinte da rivestimento, completato da una gamma di prodotti da pavimento in grès bianco smaltato (Colorado). Disponibili in 9 formati di produzione, spessore mm 8, più i pezzi speciali "Clever" e "CleverOne".

Double firing tiles; glossy surface. A series of 36 colours, all matching, split into 9 reference families. "Colore&Colore" is a magnificent group of colours for wall coating, completed with a range of products for floor coating, in white glazed stoneware (Colorado). Available in 9 different sizes, thickness 8 mm, plus the special pieces "Clever" and "CleverOne".



\* Montato su pellicola trasparente / Mounted on transparent film

CLEVERONE cm 2x40 (2x16)  
Pezzo speciale angolo esterno (in alternativa allo spigolo smussato a 45°)  
Special piece: external corner (as an alternative to the jolly)

CLEVER cm 1x20 (2/5x8)  
Pezzo speciale polifunzionale: terminale di rivestimento, cornice, angolo esterno (in alternativa allo spigolo smussato a 45°)  
Multifunctional-special piece: terminal wall tiles, frame, external corner (as an alternative to the jolly)

COLOURS & BACKGROUND



Carreaux en biccuisson en finition brillante et mate.  
Une gamme de 36 couleurs, que l'on peut assortir les unes aux autres, divisées en 9 familles de référence. "Colore&Colore" est une magnifique gamme de teintes de revêtements, complétée par une série de produits de sols, en grès cérame (Colorado). Disponibles en 9 formats de production plus les pièces spéciales "Clever" et "CleverOne".

Плитка двойного обжига с гладкой глянцевой поверхностью. Цветовая гамма из 36 цветов, которые сочетаются между собой и подразделяются на 9 цветовых групп. "Colore&Colore" - это великолепная группа цветов керамической облицовочной плитки, которая сочетается с цветовой гаммой коллекции напольной плитки из керамогранита (Colorado). Представлена в 9 форматах и специальных элементах «Clever» и «CleverOne».







Pagina / Page 240  
**CUCINA / KITCHEN**, rivestimento / coating C&C B2 (cm 5x40 - 2"x16"), C&C D2 (cm 5x40 - 2"x16")

Pagina / Page 241  
**CUCINA / KITCHEN**, rivestimento / coating C&C C3 (cm 40x40 - 16"x16"), C&C B3 (cm 10x40 - 4"x16"), C&C C3 (cleverone - cm 2x40 - 4/5"x16")

# COLORE&COLORE

COLOURS & BACKGROUND



C&CA4



C&CA5



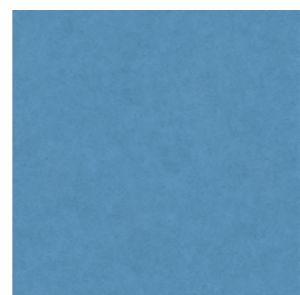
C&CA6



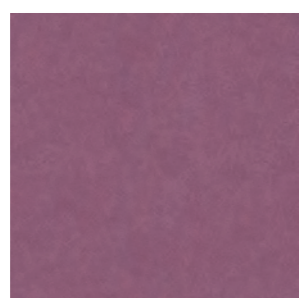
C&CB4



C&CB5



C&CB6



C&CC4



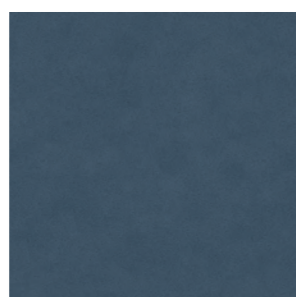
C&CC5



C&CC6



C&CD4



C&CD5



C&CD6



Formato / Size / Format / Форматы  
 cm 2,5x40 (1"x16") - cm 5x5 (2"x2") - cm 5x40 (2"x16") - cm 10x40 (4"x16")  
 cm 10x10 (4"x4") - cm 20x20 (8"x8") - cm 40x40 (16"x16")  
 Wafer cm 2,5x10 (1"x4") - Cornice cm 3x20 (1 1/4"x8") - Clever cm 1x20 (2/5"x8") - Cleverone cm 2x40 (4/5"x16")



Pagina / Page 243

**CUCINA / KITCHEN**, rivestimento / coating C&C B4 (cm 5x40 - 2"x16" - cm 2,5x40 - 1"x16"), C&C C4 (cm 40x40 - 16"x16"), pavimento / flooring Colorado C9 (cm 40x40 - 16"x16", info p. 270)

Pagina / Page 244

**BAGNO / BATHROOM**, rivestimento / coating C&C A5 (cm 10x40 - 4"x16), C&C C5 (cm 10x10 - 4"x4"), C&C A5 (wafer - cm 2,5x10 - 1"x4")

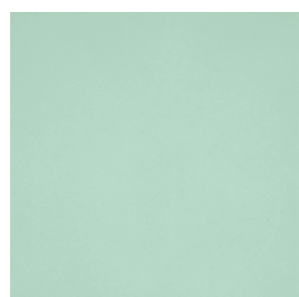
Pagina / Page 245

**CUCINA / KITCHEN**, rivestimento / coating C&C D4 (cm 5x40 - 2"x16"), C&C C6 (cm 20x20 - 8"x8")



# COLORE&COLORE

COLOURS & BACKGROUND



C&CA7



C&CA8



C&CA9



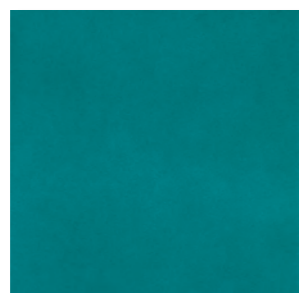
C&CB7



C&CB8



C&CB9



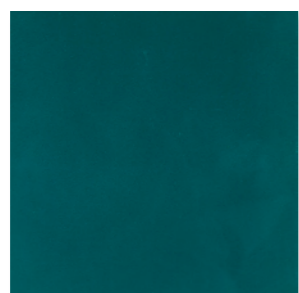
C&CC7



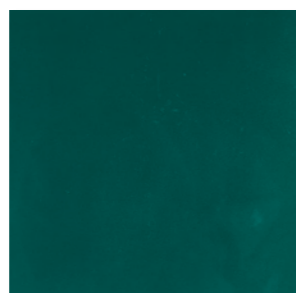
C&CC8



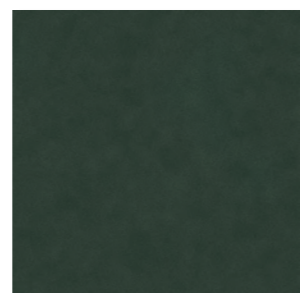
C&CC9



C&CD7



C&CD8



C&CD9

Formato / Size / Format / Форматы  
 cm 2,5x40 (1"x16") - cm 5x5 (2"x2")\* - cm 5x40 (2"x16")\* - cm 10x40 (4"x16")  
 cm 10x10 (4"x4") - cm 20x20 (8"x8") - cm 40x40 (16"x16")  
 Wafer cm 2,5x10 (1"x4")\* - Cornice cm 3x20 (1 1/4"x8") - Clever cm 1x20 (2/5"x8") - Cleverone cm 2x40 (4/5"x16")







Pagina / Page 247

**CUCINA / KITCHEN**, rivestimento / coating C&C A9-C9-D9 (cm. 2,5x40 - 1"x16", cm 10x10 - 4"x4", cm 10x40 - 4"x16", cm 20x20 - 8"x8"), pavimento / flooring Matrix 4 (cm 50x50 - 20"x20", info p. 272)

Pagina / Page 248

**BAGNO / BATHROOM**, rivestimento / coating C&C A8 (cm 10x10 - 4"x4", cm 10x40 - 4"x16", cm 40x40 - 16"x16"), C&C D8 (cm 5x5 - 2"x2", cm 5x40 - 2"x16"), C&C A1 (cm 5x5 - 2"x2", cm 5x40 - 2"x16")

Pagina / Page 249

**CUCINA / KITCHEN**, rivestimento / coating C&C D9 (cm 2,5x40 - 1"x16"), C&C C9 (cm 2,5x40 - 1"x16", cm 40x40 - 16"x16")



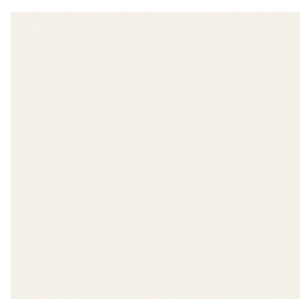
# BIANCO&NERO

Piastrelle in bicottura bianco o nero in finitura lucida (Bianco Extra - Nero Extra), e bianco finitura opaca (L.111 - L.100). Disponibili in 9 formati di produzione più i pezzi speciali "Clever" e "CleverOne".

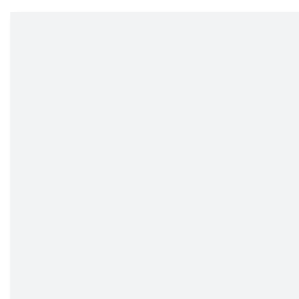
Carreaux en biccuisson blanc ou noir, en finition brillante (Bianco Extra - Nero Extra), et Blanc finition Mat (L.111 - L.100). Disponibles en 9 formats de production plus les pièces spéciales "Clever" et "CleverOne".

Double-fired ceramic tiles with glossy white or black finishing (Bianco Extra - Nero Extra), and matt white finishing (L.111 - L.100). Available in 9 different sizes plus the special pieces "Clever" and "CleverOne".

Плитка двукратного обжига с белой или черной глянцевой отделкой (Bianco Extra - Nero Extra), а также белая матовая отделка (L.111 - L.100), представлена в 9 форматах и специальных элементах "Clever" и "CleverOne".



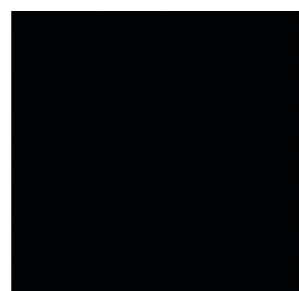
BIANCO L111



BIANCO EXTRA



NERO L100



NERO EXTRA





Pagina / Page 251  
**CUCINA / KITCHEN**, rivestimento / coating BIANCO EXTRA  
(cm 5x5 - 2"x2", wafer - cm 2,5x10 - 1"x4", cm 10x10 - 4"x4"),  
NERO EXTRA (wafer - cm 2,5x10 - 1"x4")

Pagina / Page 252  
**BAGNO / BATHROOM**, rivestimento / coating NERO EXTRA  
(wafer - cm 2,5x10 - 1"x4", cm 10x40 - 4"x16")

Pagina / Page 253  
**BAGNO / BATHROOM**, rivestimento / coating NERO EXTRA  
(cm 2,5x40 - 1"x16"), Wafermix 10 (cm 10x10 - 4"x4", info p. 258)

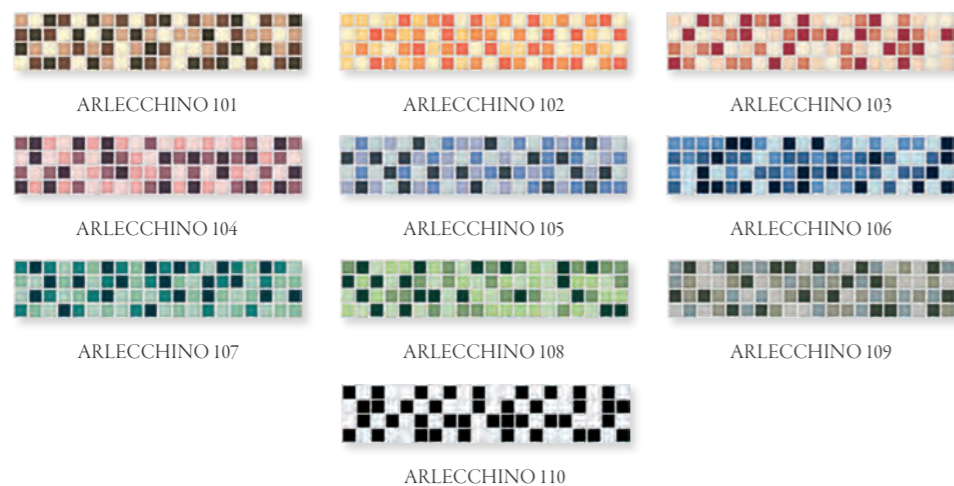
# ARLECCHINO

Diverso nei colori ma unito da uno spirito vivace, "Arlecchino", dalle piccole piastrelle (cm 2x2) montate su rete formato cm 8x40, è un magnifico mosaico in 9 varianti di colore (ciascuna composta da 4 diverse tinte) che sposa felice la serie "Colore&Colore". Completa la proposta la versione in bianco e nero.

Différent dans les couleurs mais uni par un esprit vif, "Arlecchino", aux petits carreaux (2x2 cm) montés sur grille format cm 8x40, est une mosaïque magnifique en 9 versions de couleur (chacune composée de 4 teintes différentes) qui se marie parfaitement avec la série "Colore&Colore". La série est complétée par la version en blanc et noir.

Different in colour but united by a lively spirit, "Arlecchino", with its small tiles (2x2 cm) on mesh support size cm 8x40, is a magnificent mosaic in 9 colour variations (each consisting of 4 different colours) which happily matches the "Colore&Colore" series. Completed by black and white.

Представленная разными цветами, но объединенная общим ярким характером, коллекция Arlecchino представляет собой удивительную мозаику из маленьких тессер (формата 2x2), наклеенных на сетку формата 8x40. 9 цветовых вариантов (каждый состоит из 4 различных цветов) прекрасно сочетаются с серией Colore&Colore. Дополняется черно-белым вариантом.



COLOURS & BACKGROUND



COLOURS & BACKGROUND

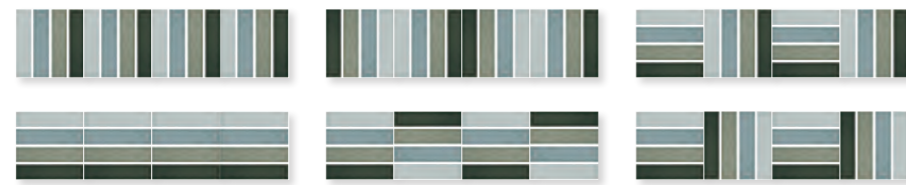
# WAFERMIX

Nasce dal formato cm 2,5x10 della collezione Colore&Colore e utilizza le quattro tinte di ogni singola famiglia, accostate in gradazione per formare una piastrella cm 10x10. La serie comprende 9 varianti di colore, più il bianco e nero, montate su pellicola trasparente.

Issu du format 2,5x10 cm de la collection Colore&Colore, il exploite les quatre teintes de chaque famille, associées par nuances pour former un carreau 10x10 cm. La série comprend 9 variantes de couleur, plus le noir et blanc, montées sur film transparent.

Stemming from the 2,5x10 cm size of the Colore&Colore collection, the series comprises the four hues of each individual family, in consecutive shades, forming a 10x10 cm tile. The series includes 9 colour variants, plus white and black, fitted on a transparent film.

Коллекция является продолжением линии Colore&Colore и сочетает четыре оттенка каждой цветовой группы в формате 2,5x10 см, образуют плитку 10x10 см. Серия представлена 9 цветными и одним черно-белым декором и поставляется монтированной на прозрачной пленке.



SUGGERIMENTI DI POSA / ADVICE FOR LAYING THE TILES





Pagina / Page 259

**BAGNO / BATHROOM**, rivestimento / coating WAFERMIX 1  
(cm 10x10 - 4"x4")

Pagina / Page 260-261

**CUCINA / KITCHEN**, rivestimento / coating WAFERMIX 2  
(cm 10x10 - 4"x4"), C&C C1 (cm 40x40 - 16"x16", info p. 234),  
C&C C2 (cm 10x40 - 4"x16" - cm 40x40 - 16"x16", info p. 234)

Pagina / Page 263

**CONTRACT**, rivestimento / coating FABRICS 1 (cm 20x20 -  
8"x8"), Tangram 1 (cm 20x20 - 8"x8")

Pagina / Page 265

**BAGNO / BATHROOM**, rivestimento / coating LAYERS 3  
(cm 20x100 - 8"x40"), Baiadera 3 (cm 20x100 - 8"x40")

Pagina / Page 266-267

**CUCINA / KITCHEN**, rivestimento / coating LAYERS 5-6  
(cm 20x100 - 8"x40")

# FABRICS

Piastrelle da pavimento e rivestimento d'interni, in grès bianco smaltato; una gamma di nove colori interamente pennellati a mano su fondo opaco, coordinati ai decori della collezione "Tangram". Formato cm 20x20, spessore mm 7.

Interior floor and wall tiles in white glazed stoneware; a range of nine entirely hand-painted colours on a matt background, matching the decors of the "Tangram" collection. Size: 20x20 cm, thickness 7 mm.

Carreaux pour revêtement de sols et murs d'intérieurs, en grès émaillé à pâte blanche; une gamme de neuf couleurs entièrement peintes à la main sur fond opaque, coordonnées aux décors de la collection "Tangram". Format 20x20 cm, épaisseur 7 mm.

Напольная и настенная плитка из белого глазурованного керамогранита. Цветовая гамма из девяти цветов, расписанных вручную на матовой поверхности, сочетаемой с декорами коллекции Tangram. Формат 20x20 см, толщина 7 мм.



FABRICS 1-PEI IV FABRICS 2-PEI III FABRICS 4-PEI II



FABRICS 3-PEI IV FABRICS 5-PEI III FABRICS 6-PEI III FABRICS 7-PEI III



FABRICS 8-PEI IV FABRICS 9-PEI II





# LAYERS

Piastrelle in ceramica da rivestimento in bicottura; una gamma di sei colori a tinta unita finitura opaca, coordinati ai decori della collezione "Baiajera". Disponibili nei formati: cm. 20x100 e cm. 20x60, spessore mm 9,5.

Carreaux en céramique pour revêtement mural, en bi-cuisson; une gamme de six couleurs à teinte unie finition opaque, coordonnées aux décors de la collection "Baiajera". Disponibles aux formats: 20x100 cm et 20x60 cm, épaisseur 9,5 mm.

Double-fired ceramic wall tiles; a range of six solid colours with a matt finishing, matching with the decors of the "Baiajera" collection. Sizes available: 20x100 cm and 20x60 cm, thickness 9,5 mm.

Настенная керамическая плитка двойного обжига. Цветовая гамма из шести цветов, матовая однотонная поверхность, которая сочетается с декорами коллекции "Baiajera". Выпускается в размерах 20x100 см и 20x60 см, толщина 9,5 мм.





# COLORADO

Piastrelle da pavimento in grès bianco smaltato, disponibili in 16 varianti di colore finitura lucida, abbinabili a tutti i decori delle collezioni di Ceramica Bardelli. Disponibile in due formati: cm. 20x20 spessore mm 7 e cm. 40x40 spessore mm 7,5.

Carreaux de sol en grès émaillé à pâte blanche, disponibles en 16 variantes de couleur finition brillante, pouvant être assortis à tous les décors des collections de Ceramica Bardelli. Disponible en deux formats: 20x20 cm, épaisseur 7 mm et 40x40 cm, épaisseur 7,5 mm.

Interior floor tiles in white glazed stoneware, available in 16 colour variations - glossy finishing, matchable with all Ceramica Bardelli decorations. Two sizes available: 20x20 cm, thickness 7 mm and 40x40 cm, thickness 7,5 mm.

Напольная плитка из белого керамогранита, представлена из 16 цветовых вариантов с матовой отделкой, сочетается со всеми декорами коллекций Ceramica Bardelli. Два формата: 20x20 см с толщиной 7 мм и 40x40 см с толщиной 7,5 мм.



COLORADO A1 - PEI IV



COLORADO B1 - PEI III



COLORADO B2 - PEI IV



COLORADO C2 - PEI II



COLORADO D3 - PEI II



COLORADO C4 - PEI II



COLORADO B5 - PEI IV

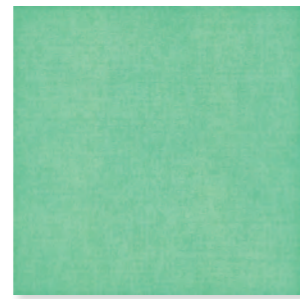


COLORADO C6 - PEI II





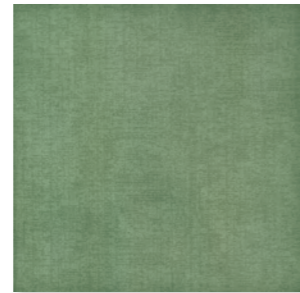
COLORADO A5 - PEI IV



COLORADO B7 - PEI III



COLORADO B8 - PEI IV



COLORADO C8 - PEI III



COLORADO A9 - PEI IV



COLORADO C9 - PEI III



COLORADO D1 - PEI II



COLORADO D9 - PEI II

Formato / Size / Format / Форматы  
 cm 20x20 (8"x8")  
 cm 40x40 (16"x16")



Pagina / Page 269  
**BAGNO / BATHROOM**, pavimento / flooring COLORADO C4  
 (cm 40x40 - 16"x16"), rivestimento / coating C&C D4 (wafer -  
 cm 2,5x10 - 1"x4", cm 20x20 - 8"x8", info p. 234), C&C A4  
 (cm 10x40 - 4"x16", info p. 234)

Pagina / Page 271  
**CUCINA / KITCHEN**, pavimento / flooring COLORADO A9  
 (cm 40x40 - 16"x16"), rivestimento / coating Macchine Volanti 2  
 (cm 20x20 - 8"x8", info p. 80), Bianco Extra (cm 20x20 - 8"x8",  
 info p. 250)

# MATRIX

Piastrelle da pavimento in grès bianco smaltato, rettificato, nel formato cm. 50x50 e 12,5x50, spessore mm. 10. Matrix offre un'ampia gamma cromatica in 14 varianti di colore con finitura opaca che si accostano facilmente alle più svariate soluzioni di rivestimento. Sono disponibili battiscopa coordinati nel formato cm. 9,5x50.

Carreaux en grès émaillé à pâte blanche, rectifié, format 50x50 et 12,5x50 cm, épaisseur 10 mm. Matrix offre une large palette chromatique avec 14 coloris en finition mate qui sont très faciles à associer aux revêtements les plus disparates. Plinthes assorties disponibles au format 9,5x50 cm.

Interior floor tiles in white glazed stoneware, rectified, measuring 50x50 and 12,5x50 cm and 10 mm thickness. Matrix comes in 14 different matt colours, making them ideal alongside with the most different wall finishes. Coordinated 9,5x50 cm skirting boards are also available.

Глазурованный ректифицированный керамогранит для напольной укладки, представлен форматами 50x50 см и 12,5 см, толщина 10 мм. Коллекция Matrix предлагается в широкой цветовой гамме: 14 цветов с матовой отделкой, легко сочетаемые со всеми коллекциями настенных декоров. Дополнена плинтусом в формате 9,5x50 см.



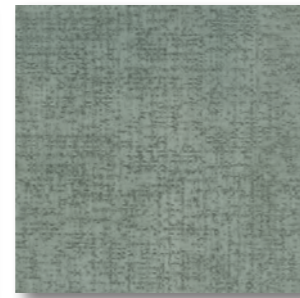
MATRIX 1 - PEI IV / R9

MATRIX 2 - PEI III / R9

MATRIX 3 - PEI III / R9



MATRIX 5 - PEI III / R9



MATRIX 4 - PEI III / R9



MATRIX 7 - PEI III / R9



MATRIX 6 - PEI III / R9





MATRIX 8 - PEI IV / R9

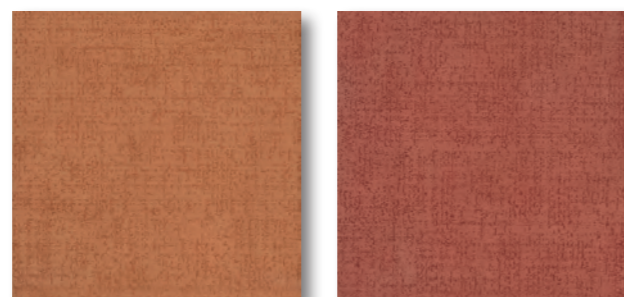
MATRIX 9 - PEI III / R9

MATRIX 10 - PEI III / R9



MATRIX 12 - PEI IV / R9

MATRIX 11 - PEI IV / R9



MATRIX 13 - PEI III / R9

MATRIX 14 - PEI III / R9

Formato / Size / Format / Форматы  
 cm. 12,5x50 (5"x20")  
 cm. 50x50 (20"x20")  
 cm. 9,5x50 (3<sup>3</sup>/<sub>4</sub>"x20") BTM battiscopa / skirting



Pagina / Page 273  
**LIVING**, pavimento / flooring MATRIX 4-5 (cm 12,5x50 - 5"x20")

Pagina / Page 275  
**LIVING**, pavimento / flooring MATRIX 7-13 (cm 50x50 - 20"x20")

Pagina / Page 276-277  
**LIVING**, pavimento / flooring MATRIX 1-9-10-11 (cm 50x50 - 20"x20")



COLOURS & BACKGROUND



COLOURS & BACKGROUND



